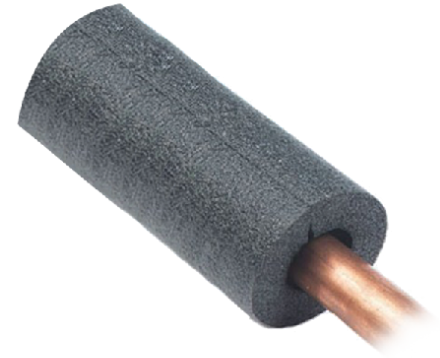


**OVERVIEW**

Our closed-cell polyethylene hot water pipe insulation is used to insulate both residential and commercial hot water, non-steam pipes, improving thermal efficiency. Insulating hot water pipes reduces heat loss and can raise water temperature 2°F - 4°F while preventing freezing and sweating. Our pipe insulation provides excellent resistance to water and water vapor. The insulation is flexible and easy to install.

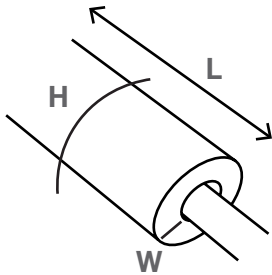


**SPECIFICATIONS**

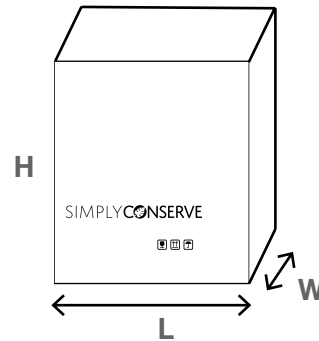
CATALOG #	R VALUE
PI010	3.66
PI011	3.60
PI016	5.66
PI018	5.95

**DIMENSIONS**

**PRODUCT**



**PACKAGING**



CATALOG #	L	W	H
PI010	3'	0.5"	1.5"
PI011	3'	0.5"	1.5"
PI016	3'	0.75"	2.25"
PI018	3'	0.75"	2.25"

CATALOG #	L	W	H
PI010	11.5"	11.4"	37.25"
PI011	11.5"	11.6"	37.25"
PI016	11.6"	11.6"	37.25"
PI018	11.5"	11.6"	37.25"

To learn more, please visit:

[www.amconservation.com](http://www.amconservation.com)